

NAMEPLATE SCHEDULE	
LOCATION ON PANEL	NAMEPLATE MESSAGE
①	SERVICE ENTRANCE 1 OF 2 (MAIN)
②	SERVICE ENTRANCE 2 OF 2 (CONTROL POWER)
③	CONTROL POWER DISCONNECT

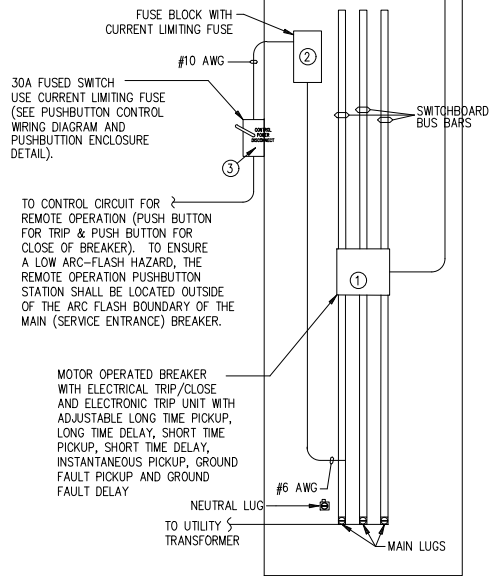
NOTES

1. INSTALL ENGRAVED NAMEPLATE AS SHOWN IN SCHEDULE ONTO SERVICE ENTRANCE PANEL AT LOCATION INDICATED. NAMEPLATE TO BE 1/4" BLACK LETTERS ON WHITE BACKGROUND.

NOTE: FOR SERVICE OVER 1,500 AMPS USE SANDWICH TYPE (TOTALLY ENCLOSED) BUSWAY UNLESS CONDUIT IS PRE-APPROVED BY OWNER.

6 FEET MINIMUM CONDUIT LENGTH -  
INSTALL O-Z/GEDNEY CONDUIT SEALING  
BUSHINGS (TYPE CSBG) IN ALL CONDUITS  
AT THE SERVICE ENTRANCE SWITCHBOARD

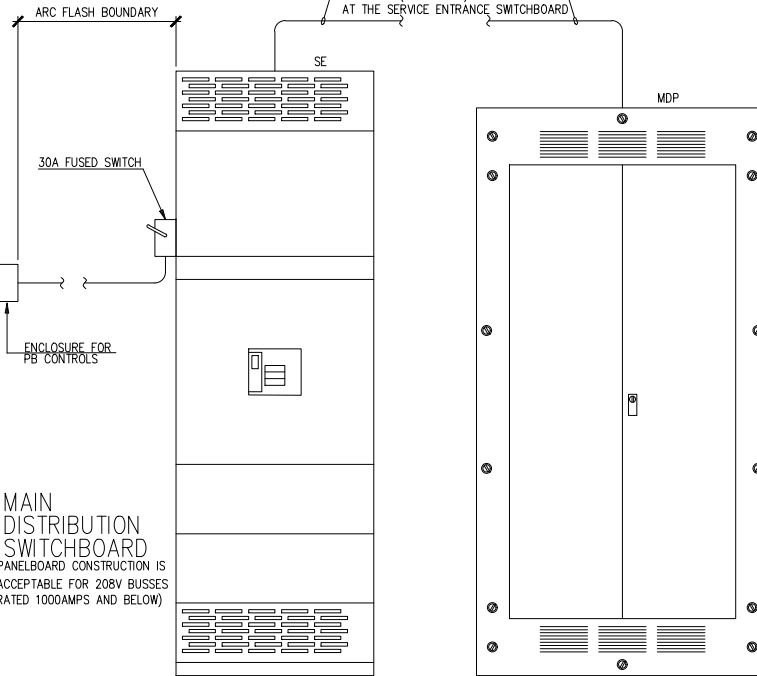
SERVICE ENTRANCE  
MAIN BREAKER SWITCHBOARD  
(PANELBOARD CONSTRUCTION IS ACCEPTABLE FOR  
208V BUSSES RATED 1000AMPS AND BELOW)



1  
E1

SERVICE ENTRANCE DETAIL

SCALE NOT TO SCALE



2  
E1

SERVICE ENTRANCE ELEVATION

SCALE NOT TO SCALE

05/30/18 ISSUED FOR CONSTRUCTION

GENERAL SITE  
COLUMBIA, BOONE COUNTY, MISSOURI 65211  
SERVICE ENTRANCE DETAIL

CAMPUS FACILITIES  
Planning, Design & Construction



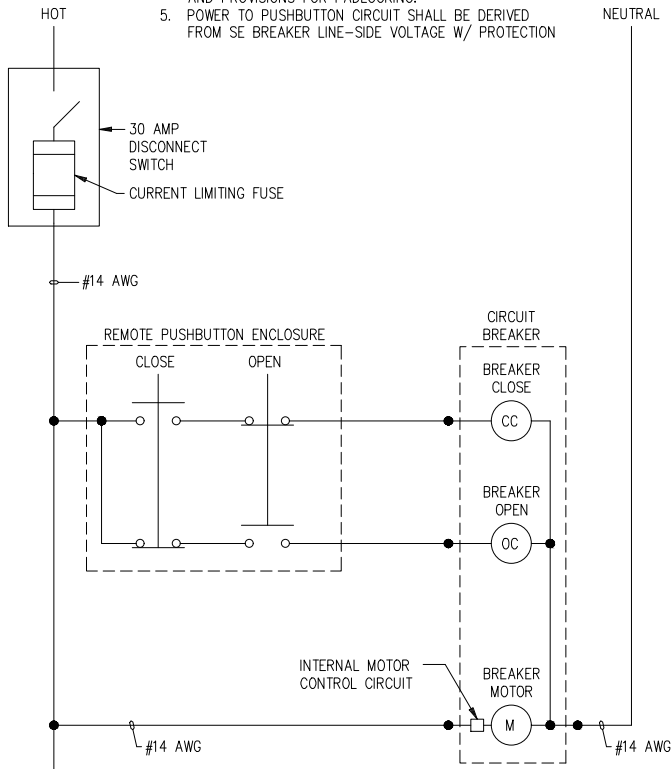
Design Services  
UNIVERSITY OF MISSOURI

CKD BY:  
DWN BY: JDR

PROJECT NUMBER  
CP \_\_\_\_\_

SHEET  
E1  
of 2

- NOTES**
1. PUSHBUTTONS SHALL HAVE PROTECTIVE SHROUDS.
  2. OPEN PUSHBUTTON SHALL BE GREEN COLOR.
  3. CLOSE PUSHBUTTON SHALL BE RED COLOR.
  4. PROVIDE NEMA 3R ENCLOSURE WITH HINGED COVER AND PROVISIONS FOR PADLOCKING.
  5. POWER TO PUSHBUTTON CIRCUIT SHALL BE DERIVED FROM SE BREAKER LINE-SIDE VOLTAGE W/ PROTECTION



### PUSHBUTTON CONTROL WIRING DIAGRAM

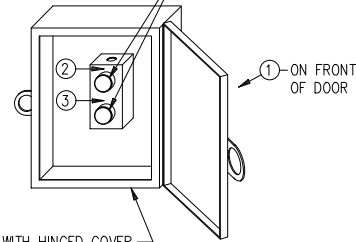
1  
E2 SCALE NOT TO SCALE

**NOTES**

1. PUSHBUTTONS TO BE HEAVY DUTY 30.5 mm MOUNTED IN DIE-CAST ZINC BOX WITH 3/4" NPT CONDUIT ENTRANCE.
2. PUSHBUTTON MODULE (SEE NOTE 1) TO BE MOUNTED IN THE BACK OF A 8" X 10" X 6" DEEP NEMA 3R ENCLOSURE.
3. INSTALL ENGRAVED NAMEPLATE AS SHOWN IN SCHEDULE FOR PUSHBUTTONS AND ON ENCLOSURE AT LOCATION INDICATED. NAMEPLATE TO BE 1/8" (MIN.) BLACK LETTERS ON WHITE BACKGROUND.

NAMEPLATE SCHEDULE	
LOCATION ON PANEL	NAMEPLATE MESSAGE
①	BUILDING MAIN CIRCUIT BREAKER REMOTE OPERATION PUSHBUTTON STATION
②	OPEN
③	CLOSE

PUSHBUTTONS (WITH GUARD) FOR OPEN & CLOSE OF SERVICE ENTRANCE MAIN BREAKER



NEMA 3R ENCLOSURE WITH HINGED COVER AND PROVISIONS FOR PADLOCKING

### ENCLOSED PUSHBUTTON CONTROL DETAIL

2  
E2 SCALE NOT TO SCALE

ISSUED FOR CONSTRUCTION							
05/30/18	<	<	<	<	<	<	<
<b>GENERAL SITE</b> <b>COLUMBIA, BOONE COUNTY, MISSOURI 65211</b> <b>SERVICE ENTRANCE DETAIL</b> <b>PUSHBUTTON AND ENCLOSURE DETAILS</b>							DWN BY: JDR CKD BY:
<b>CAMPUS FACILITIES</b> <i>Planning, Design &amp; Construction</i>							<i>Design Services</i> <small>UNIVERSITY OF MISSOURI</small>
PROJECT NUMBER							
CP _____							
SHEET							
E2							
of 2							